





**FREQ. STABILITY vs. TEMP. RANGE**

Load Capacitance	ppm	A: ±5	B: ±10	P: ±15	C: ±20	E: ±30
A	8pF	×	×	△	○	○
C	10pF	×	×	△	○	○
D	12pF	×	△	○	○	○
F	16pF	×	△	○	○	○
S	Series	△	○	○	○	○

○:Standard △:Available (case by case) ×:Not available

**FREQ. STABILITY vs. TEMP. RANGE**

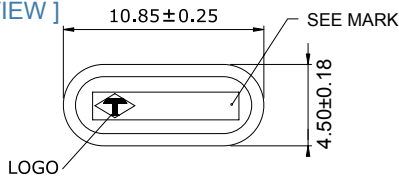
Temp. (°C)	ppm	A: ±5	B: ±10	P: ±15	C: ±20
I	-10~+60	×	○	○	○
C	-20~+70	×	△	○	○
L	-40~+85	×	×	×	○

○:Standard △:Available (case by case) ×:Not available

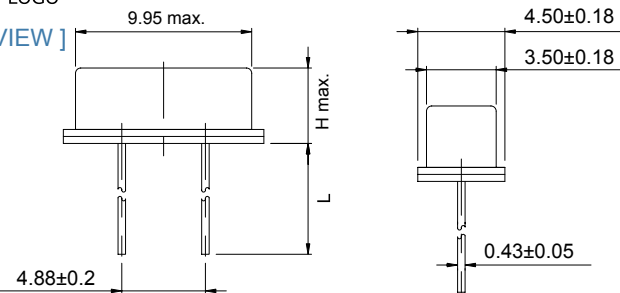
**OUTLINE DRAWING**

**XI**

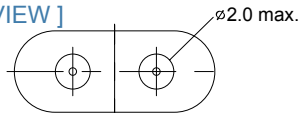
[ TOP VIEW ]



[ SIDE VIEW ]



[ BOTTOM VIEW ]



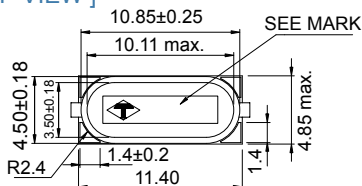
UNIT : mm

MODEL	H(mm)
XI	3.51

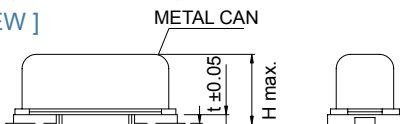
MARK	
1	MARK 1 : XX.X MY XX.X = FREQUENCY UNIT:MHz M:MONTH A→ JAN    G→ JUL B→ FEB    H→ AUG C→ MAR    I→ SEP D→ APR    J→ OCT E→ MAY    K→ NOV F→ JUN    L→ DEC Y : YEAR 200X
2	MARK 2 XX.XXX UNIT:MHz
3	MARK BY CUSTOMER

**XJ**

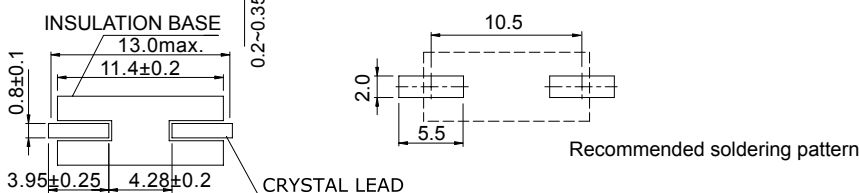
[ TOP VIEW ]



[ SIDE VIEW ]



[ BOTTOM VIEW ]



UNIT : mm

MODEL	H(mm)
XJ	4.20